



Rolleiflex 6008 AF Sinarback eMotion²²

High-End Mobile Digital Photography

High Performance, Mobility and Efficiency

The Rolleiflex 6008 AF is a High-Tech camera for photographers who value rapid and comfortable working as much as outstanding results. A large and brilliant viewfinder image allows exact composition. Viewfinder info bars give full control over all relevant settings.

The Rolleiflex 6008 AF is the world's first 6x6 medium-format camera with a rapid and precise AF system. It can be set to either three focus areas or a central spot. Exposure control is just as comfortable, offering a choice of aperture-priority, shutter-priority and programmed AE, compensation factors and manually set shutter speeds and apertures ensuring the necessary flexibility when lighting conditions or contrast are the determining factors of your subject.

The flash technology of the Rolleiflex 6008 AF deserves special mention. It allows TTL metering (only analog) and control not only with shoe-mounted flash units but – via preflash metering – also with studio flash units.

Being a genuine all-round camera, the Rolleiflex 6008 AF has no problem changing from digital to analog and allows shooting on roll film in 6x6cm and 4.5x6cm formats (horizontal and vertical) with the same ease as on digital.

Together with the Rolleiflex 6008 AF, Franke & Heidecke GmbH and Sinar AG offer the Sinarback eMotion²² Digital Back as an attractive package.

The combination of a medium-format camera and a 22-megapixel high-performance back is ideal for photographers treasuring the utmost mobility, be it in the studio or on location.



The Sinarback eMotion²² excels above all by its compactness (94 x 78 x 75mm) and its light weight of only 600 g. Moreover, it is easy and intuitive to operate and extremely fast: The unit is ready to operate a mere two seconds after being switched on. Its menu control is totally practice-oriented, allowing the photographer to concentrate fully on his subject, without having to struggle with awkward manipulations.

The resolution of the digital back's 48 x 39mm sensor gives 5,344 x 4,008 pixels, each of which measures 9x9 µm, resulting in a color depth of 16 bits per color. This allows subsequent color corrections to be applied without giving rise to gaps in the histogram. The sensitivity of the CCD sensor, which has a dynamic range of 12 f-stops, can be varied from ISO 25 to 200. Shooting speed is a maximum 1.2 seconds or 50 frames per minute.

Photo: Klaus Harenberg / ISO 50, f/16, 30 sec.



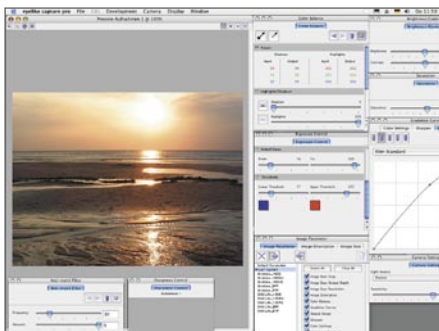
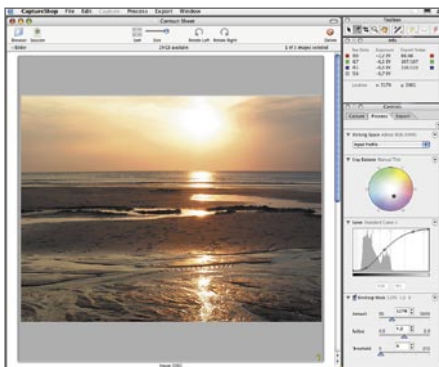
Image data can be stored in parallel in the internal read-only memory (3 GB) and optionally on a CF card (type I or II). On location, a lithium-ion battery supplies the necessary power.

The independent power supply leaves optimum freedom of motion. For shoots outside the studio, the digital back is fitted with a lithium-ion battery that supplies sufficient energy for about 250 frames (three hours of work). An integral 2.2" OLED color monitor with a resolution of 116,000 pixels offers perfect vision regardless of the viewing angle. It is capable of displaying 16 million colors for instant image review, shows a histogram, warns against exposure errors and also serves to select sensitivity and white balance. The latter has presets for daylight, tungsten, flash and the light from fluorescent tubes or HMI lamps.

Image data can be stored in parallel in the internal read-only memory (3 GB) and optionally on a CF card (type I or II), which guarantees optimum data security at all times. Possible data formats are: RAW, RGB-TIFF and JPEG. File sizes are between 48 and 128 MB. ICC profiles can be embedded for optimum color management. A FireWire port is provided for connection to a computer.



Photo: Stefan Sobotta



The Sinar Capture Shop™ 5 software supplied with the back guarantees a flexible, highly precise workflow that satisfies all editing requirements. Thanks to its dynamic plug-in structure, the user-friendly user surface can be freely configured.

The versatile and user-friendly Sinar software has been specially designed for the professional photographer, its features including:

- Live-image viewfinder mode
- Full-resolution color live-image magnifier for focusing with pixel accuracy
- Multi-functional and printable contact sheet
- Quick Zoom for rapid checking of detail sharpness
- Various export file formats, such as JPEG, TIFF, PhotoShop, etc.
- Full support of ICC color management
- Integral camera control, such as flash, shutter speed and aperture



After releasing its lock, the Sinarback eMotion²² can easily be turned from horizontal to vertical format.

Specifications

Rolleiflex 6008 AF

Camera type

Single-lens reflex system camera with electronic microcomputer control; autofocus, focus indicator, multi-exposure control, variable metering modes, TTL autoflash, motorized film advance and control grip.

AF System

Three-area phase-comparison AF system, focus lock, optional spot AF, manual focusing via LCD (focus indicator).

Shutter and aperture

Lens shutter (1/500 s or 1/1000 s to 30 s in 1/3 increments plus B, T) and aperture electronically controlled by camera; Direct Drive technology using two linear motors built into lenses.

Exposure metering

- » **Center-weighted multi-zone metering** with seven silicon cells arranged in five groups behind the reflex mirror.
- » **Spot metering** with central photo diode (approx. 1% of frame area).
- » **Multi-spot metering** with up to five separate spot readings in memo mode. Automatic stray-light compensation during reading and shutter tripping.

Exposure compensation

Manually in 1/3 increments from -4 2/3 to +2 EV. Optional bracketing from ±1/3 to ±9/3.

Autoflash

Film-plane TTL flash metering via additional Si photo diode, display of flash readiness and exposure check in viewfinder.

Flash synchronization

Full sync at all shutter speeds from 1/1000 s (PQS) or 1/500 s (PQ) to 30 s. Hot shoe with additional contacts for system flash units (SCA-3000), Rollei SCA-3562 Flash Adapter (SCA-356).

Exposure modes

- » **Shutter-priority AE**
- » **Aperture-priority AE**
- » **Programmed AE biased for high speeds**
- » **Metered manual in 1/3 increments**

Exposure lock

Enabled in all Auto modes. Locks shutter speed and aperture (exposure value).

Shutter releases

On right-hand front of camera and on shutter-speed dial. Socket for cable and remote-control release, self-timer.

Depth-of-field preview

Push-button controlled, in any camera mode.

Mirror lockup

In any camera mode, with exposure lock and indicator.

Lens mount

Rollei bayonet mount, 10pin contact strip for aperture and shutter signal transfer.

Lenses

Interchangeable Schneider PQ and PQS AF lenses.

Reflex mirror

Lockup instant return mirror with pneumatic brake.

Viewfinder system

Standard folding hood, interchangeable with 45° prism finder, rigid magnifying hood and telescopic 90° finder. Interchangeable focusing screens.

Viewfinder information

Info bar showing all relevant data.

Power supply

Rechargeable sintered nicad battery for about 200 shots per full charge at 20°C.

Handgrip

With four click stops, detachable.

Terminals

14pin universal-plug connector with screw mount for cable release and other electrical release devices, interface for digital backs and PC.

Working temperature

From -20°C to +60°C.

Dimensions (mm/wxhxd) without handgrip

Without lens: 143x139x124

With 80mm f/2.8 lens: 143x139x176

Weight

Without lens 1,450 g; with standard 80mm f/2.8 lens 2,060 g

Sinarback eMotion²²

Sensor size: 48x36 mm

Sensor resolution: 5344 x 4008 pixels

File size: 124 MB (one-shot 48 bits)

Shooting frequency: Up to 50 frames per minute

Sensitivity: ISO 25, 50, 100, 200

Exposure times: 1/10,000 s to 32 s

Monitor screen: 2.2", 24 bits per color (16 million colors)

Memory: 3GB internal ROM; CompactFlash, types I and II

Dedicated camera: Rolleiflex 6008 AF

Battery: Lithium-ion

Battery capacity: Up to three hours or approx. 250 frames

System requirements: Apple PowerMac G5, Mac OS 10.3.7, 1GB RAM, (recommended) IEEE1394A interface, PC version in preparation

Dimensions (mm/wxhxd): 94x78x75

Weight: approx. 600